

DM24



QUICK-SEARCH
YG-1 PRODUCTS!!
www.yg1.solutions

YG-1 CO., LTD.

HEAD OFFICE

13-40, Songdogwahak-ro 16beon-gil, Yeonsu-gu,
Incheon 21984, South Korea

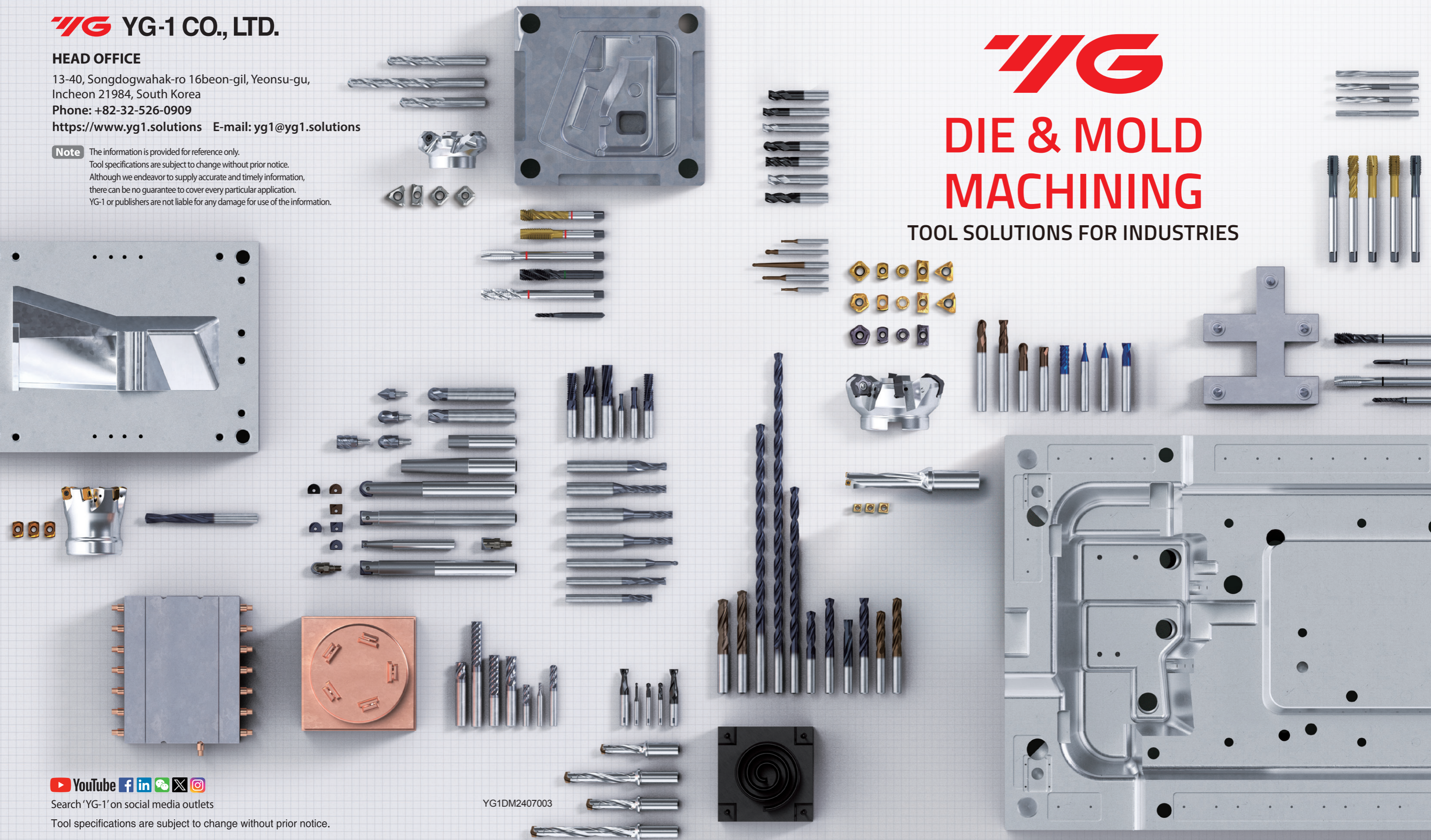
Phone: +82-32-526-0909

<https://www.yg1.solutions> E-mail: yg1@yg1.solutions

Note The information is provided for reference only.
Tool specifications are subject to change without prior notice.
Although we endeavor to supply accurate and timely information,
there can be no guarantee to cover every particular application.
YG-1 or publishers are not liable for any damage for use of the information.

YG
DIE & MOLD
MACHINING

TOOL SOLUTIONS FOR INDUSTRIES

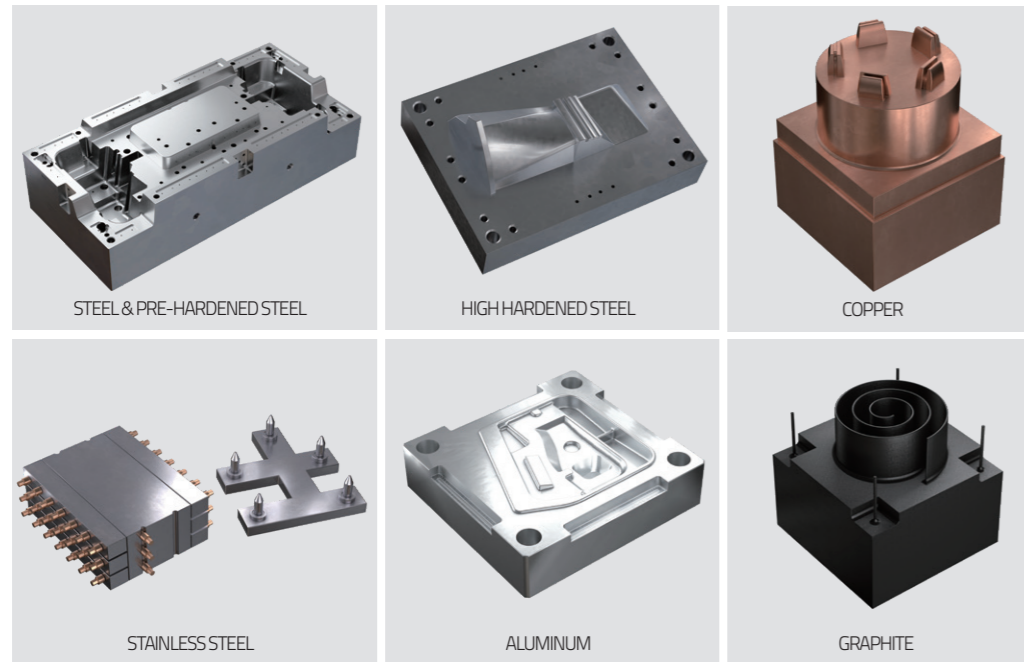


Search 'YG-1' on social media outlets

Tool specifications are subject to change without prior notice.

YG1DM2407003

DIE & MOLD INDUSTRY



Currently, Die & Mold activities are fully part of the mass production industry, to support the demand of sectors such as automotive, aerospace, electronic, packaging, and more.

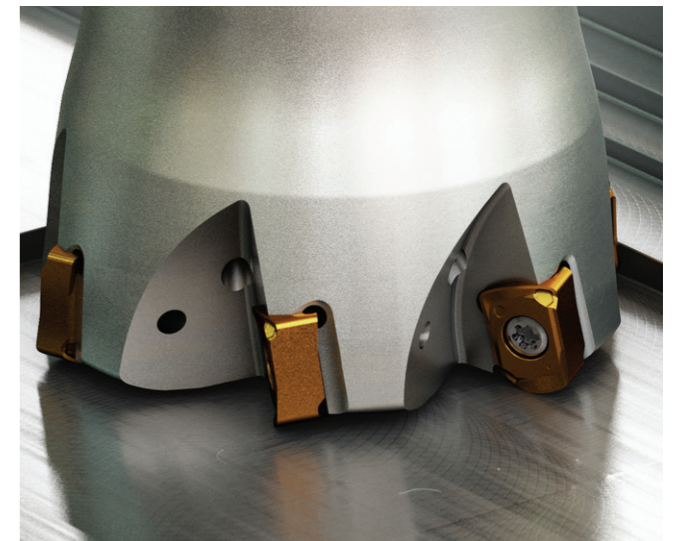
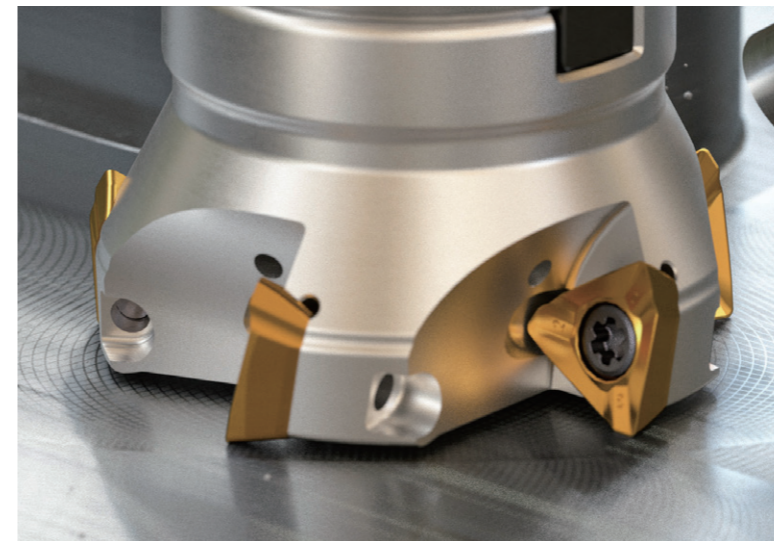
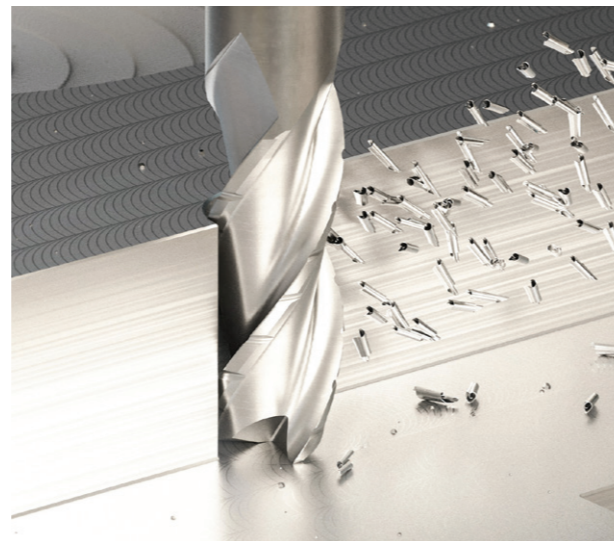
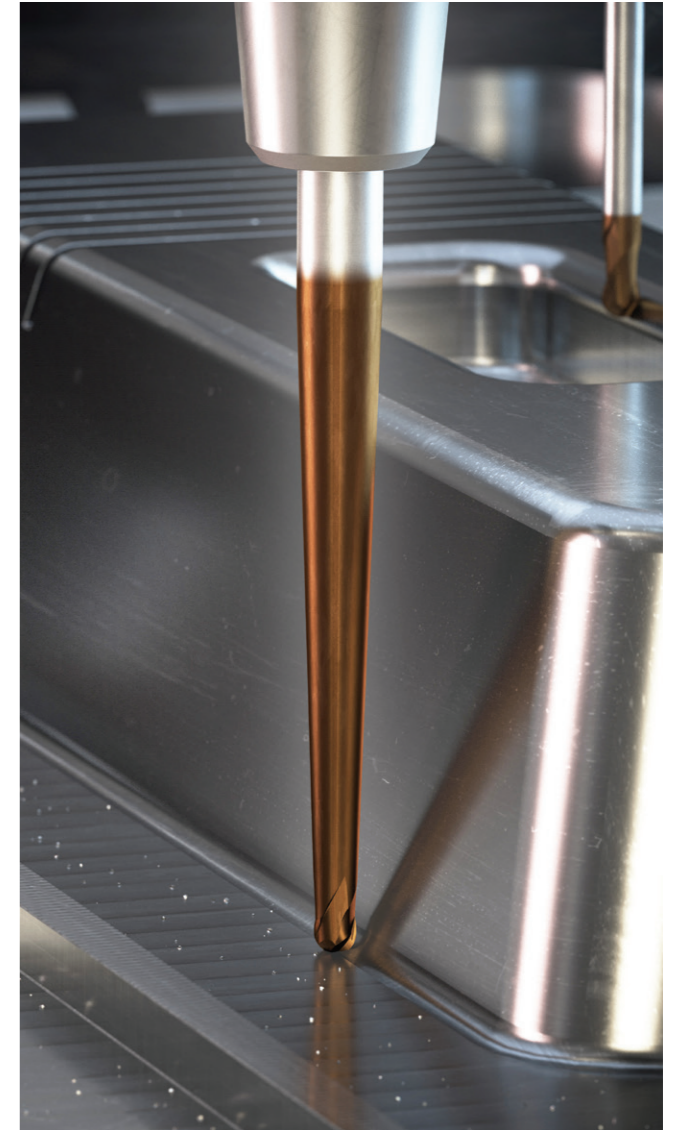
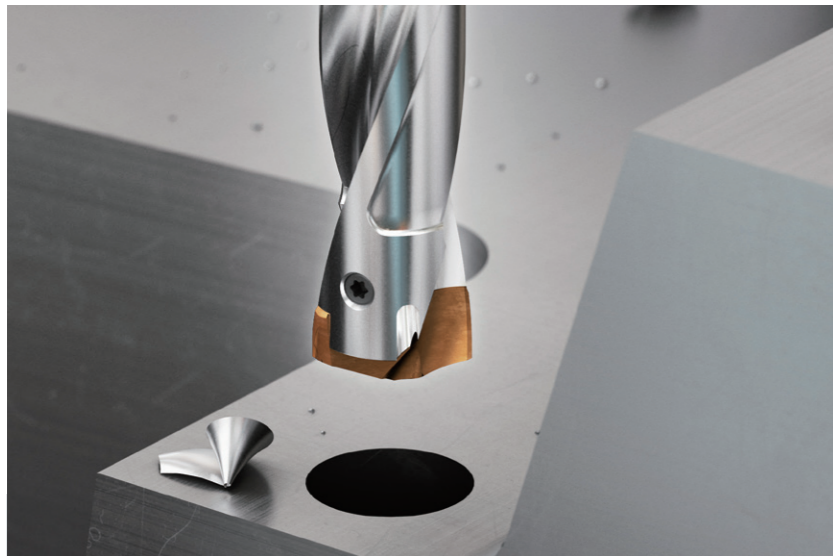
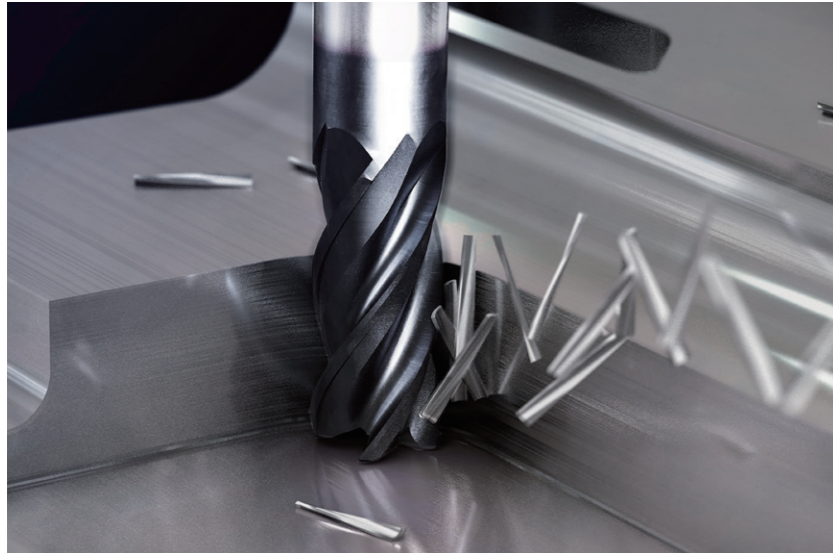
The newest available technology, such as sophisticated CAM software and new generation machine tools, always faster and with better performance, for Die & Mold customers, is the ideal and necessary tools to achieve targets such as high quality niche products, longer life of the molds and even faster machining with greater profitability.

For the Die & Mold industry, there is a need to be able to count on a cutting tools company with reliable tools to deal with the processing of free form shapes.

YG-1, as a global leader in the manufacture and application of cutting tools, brings you these innovations worldwide in the form of superior tooling, expert support, and world class delivery.

CONTENTS

INTRODUCTION	04
APPLICATIONS - STEEL & PRE-HARDENED STEEL	06
APPLICATIONS - HIGH HARDENED STEEL	08
APPLICATIONS - STAINLESS STEEL	10
APPLICATIONS - COPPER	12
APPLICATIONS - GRAPHITE	12
APPLICATIONS - ALUMINIUM	13
TECHNICAL SUPPORT	14



DIE & MOLD MACHINING

When speaking of molds, there are different types in the world. For example: molds for plastic materials, sheet metal-cutting and forming, die-casting, rubber molding, blow molds, and forging molds. Within the mold industries, there are also several defined spare parts that complete the mold structure. This great variety implies the machining process on a wide range of materials, such as pre-hardened steels, hardened steels, cast iron, aluminum for prototypal molds, stainless steels for manifold and hot runner parts, graphite and copper for electro-erosion processes. The abundant tools YG-1 offers are able to support the needs of the Die & Mold customers, whatever the material to be processed and the application to be implemented.

STEEL & PRE-HARDENED STEEL

The Die & Mold industry makes use of different types of steels, according to the type of mold to be made. Normally they are divided into 2 families:

- Hot work steels (molds for plastic injection, rubber, forging, die-casting)
- Cold work steels (dies for shearing and plate deformation)

In the latter type of molds, the use of cast iron is also frequent.

Die & Mold industry needs a right partner to machine a wide range of different pre-hardened materials. YG-1 can cover that demand, whatever the material, application or machine.

MILLING / FINISHING / PROFILING / ROUGHING

4G MILL

Solid Carbide End Mill line, for high precision finishing. 2, 4 and 6 flutes, long length, square corner and corner radius available.



MILLING / HEAVY CUTTING / SEMI FINISHING / PROFILING

V7 PLUS

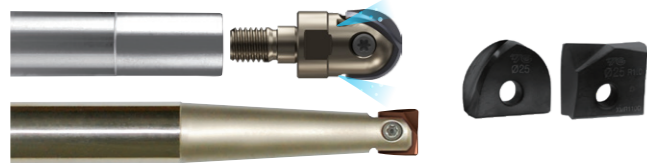
Solid Carbide End Mill line for a wide range of materials. Available in 4 and 6 flutes, with chamfer, ball nose, and corner radius. The 6 flute, available with Chip Splitters, is suitable for fine finishing and trochoidal milling as well.



COPY MILLING / PROFILING

i-Xmill

The versatile i-Xmill line, its' Corner Radius and Ball Type exchangeable inserts were developed with the Die & Mold industry in mind. Despite the long shank, the tool is virtually vibration free, and thus provides excellent results in deep pockets - one of the most common applications in machining Die & Mold sets.



SHOULDERING / HIGH FEED MILLING

YG HF4 MILL, YG SM3 MILL & YG MILL

YG SM3 Mill & HF4 Mill are products suitable for small-sized milling and multi-purpose high-feed processing, YG Mill covers in general machining, these tools are invaluable in Die & Mold machining.



MILLING / SEMI FINISHING / PROFILING

X-POWER PRO

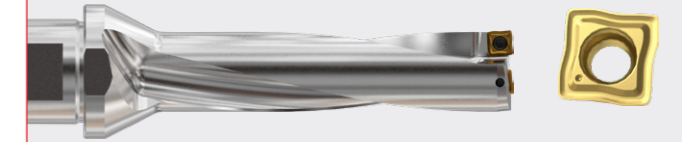
Solid Carbide End Mill line with 4 and 6 flutes, with square, ball nose and corner radius. The 6 flute type is suitable for fine side finishing and trochoidal milling as well.



DRILLING

X-DRILL

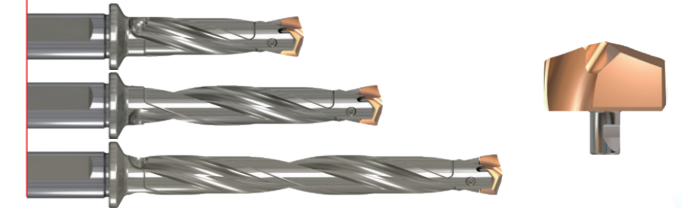
The X-Drill can use both as center and periphery for best-in-class cost-efficiency. In addition, the drill insert is designed with our proprietary technology and the twisted coolant channels to achieve optimal chip evacuation, providing a highly stable process and precise machining dimensions.



DRILLING

i-ONE DRILLS (3xD, 5xD, 8xD)

For drilling various hole sizes, i-ONE drills provide excellent performance with cost-effective exchangeable inserts. Thanks to H-coated inserts and premium tool steel holders, a good quality of holes and increased productivity can be achieved.



DRILLING

DREAM DRILLS PRO (3xD, 5xD)

PROVIDING HIGH PERFORMANCE with FASTER CUTTING SPEED (HRC30 TO HRC50)

Extremely high hardness and heat resistance due to YG-1 special Z-Coating technology for Carbon Steels, Alloy Steels (HB225-325), Pre-hardened Steels (HRC30~50), Cast Iron.



REAMING

CARBIDE REAMERS

Precision is paramount in machining top quality for Die & Mold sets. Our straight and spiral flute carbide reamers perform perfectly required hole sizes every time.



THREADING

THREAD MILL | PRIME TAP SYNCHROTAP | COMBO TAP

YG-1 offers a full range of threading solutions. Spiral Flute, Spiral Point, Straight Flute, Cold Forming Taps as well as Thread Mills are available and achieve excellent results by our innovative technology.



DEEP DRILLING

DREAM DRILLS MQL

(10xD, 15xD, 20xD, 25xD, 30xD, 35xD, 40xD)

For very deep drilling, YG-1 provides the DREAM DRILLS - MQL line of long drills. It also can perform drilling with the MQL (Minimum Quantity Lubrication) and general coolant for reducing the generated heat and thus greatly prolong the tool life.



* We can provide our full line; milling, holemaking and threading for every Die & Mold application

QR Scan QR code to see Catalogs

HIGH-HARDENED STEEL

High-hardened steel is used widely in the Die & Mold industry to manufacture parts such as Jet Turbine Blades, as represented by the picture on this page. High-hardened steel poses significant machining challenges, requiring the toughest of tools. YG-1 has got just the solution in the form of our excellent X1-EH, X5070, YG HF4 Mill(-TR Chip Breaker), i-Xmill families for milling, and Dream Drills - High Hardened steel line for holemaking.

MILLING / FINISHING / PROFILING

X1-EH

X1-EH is a C-coated Nano Grain Solid Carbide End Mill. Achieving Next Level Performance in high hard materials over 50 HRC. This exceptionally high accuracy product makes it the ideal choice for precision milling.



MILLING / HIGH FEED / PROFILING

X5070

X5070 is an excellent product that made a name for itself in the market. Featuring our "Blue Coating", it is specifically made to cover the HRC50-70 ranges of High - hardened steels. Featuring a variety of geometries, flute count and sizes, it is a perfect solution for a multitude of machining applications.



FACING / HIGH FEED MILLING

YG HF4 MILL [-TR Chip Breaker]

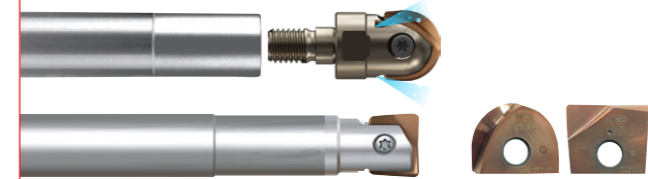
High Feed Inserts for Hardened Steel

YG HF4 MILL is our premium Indexable high Feed milling tools with thick thickness and reinforced edge, utilizing the tough -TR chip breaker geometry our Indexable tools are the perfect choice.



COPY MILLING / PROFILING

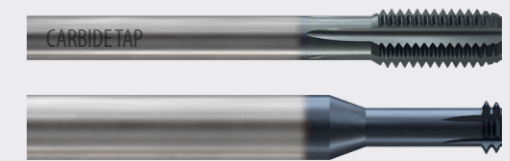
i-Xmill [for HIGH HARDENED STEELS]



The versatile i-Xmill line, which is specifically developed with the Die & Mold industry in mind is once again up to the challenge. Featuring strong carbide inserts that can easily machine hardened steels.

THREADING

YG TAP HARDENED THREAD MILL



Carbide Straight Flute Taps and Thread Mills are available and achieve excellent results by our innovative technology. YG-1 provides a solution to any threading tasks in machining Die & Mold sets.

DRILLING

DREAM DRILLS for HIGH HARDENED STEEL



Drilling High Hardened Steel is a significant challenge due to the tremendous forces, very few drills can withstand it. "DREAM DRILLS for HIGH HARDENED STEEL" features special geometry design for drilling the high hardened steels with minimum of cutting load through a special thinning. Drilling for High Hardened Steels, Quenched Steels, Tempered Steels (Under HRC 70) Performing good chip removal and powerful drilling.

* We can provide our full line; milling, holemaking and threading for every Die & Mold application

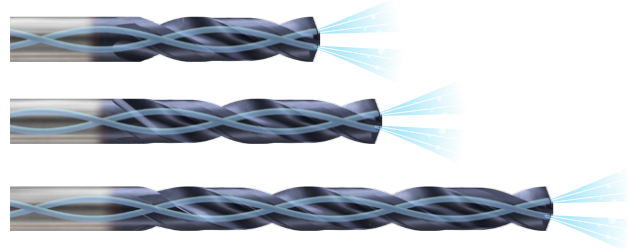
QR Scan QR code to see Catalogs

STAINLESS STEEL

The molds are becoming more and more complete production systems and, at the same time, complexes that imply different characteristics in their components, among which is corrosion resistance (for example for hot runner and manifolds). Hence the use of stainless steel. Thanks to the characteristics of its products, YG-1 is able to support Die & Mold customers for the processing of these specific materials also.

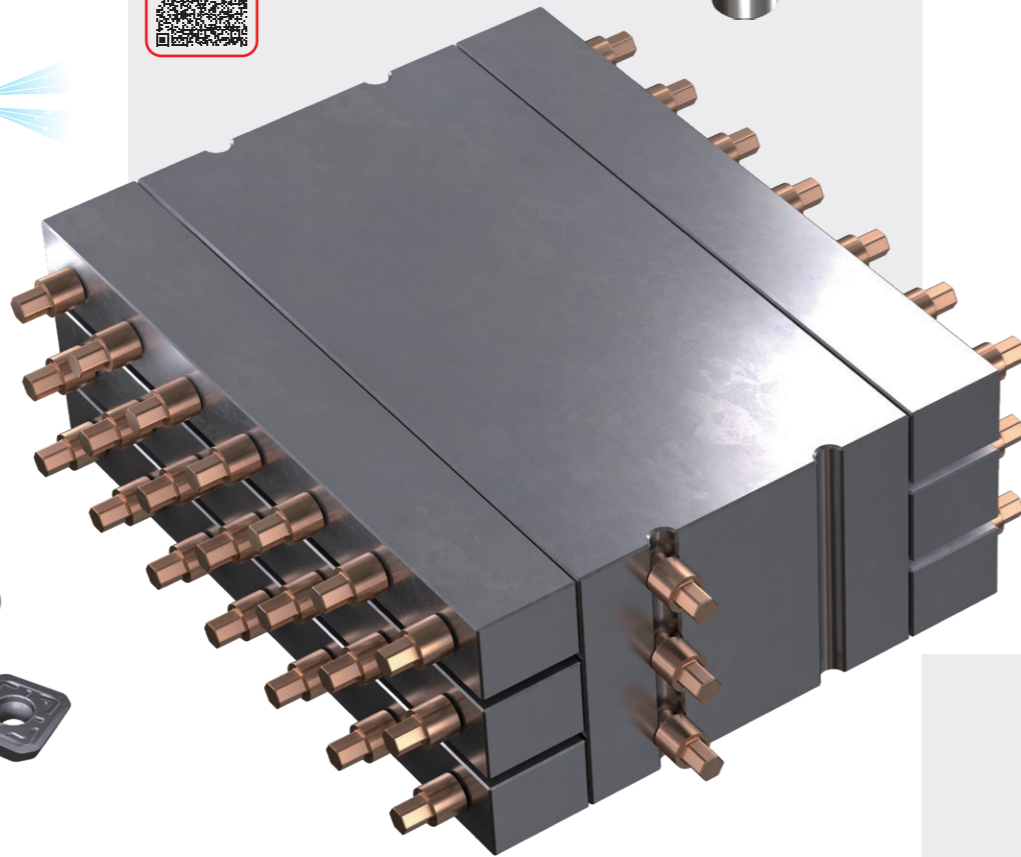
DRILLING
DREAM DRILLS INOX (3xD, 5xD, 8xD)

DREAM DRILLS INOX has the special flute shape and geometry for suitable machining of stainless steels. It can provide excellent chip evacuation due to better surface treatment and point R-thinning makes superior centering and chip curling. It achieves a better surface finish and a longer tool life.



DRILLING
YG DRILL [-ST Chip Breaker]
Square insert with sharp ST Chip Breakers

Covering as much materials as possible is one of YG-1 goals in the field of indexable drills. Now larger diameters and improved cost-efficiency is made it's way to stainless steels, with the introduction of the -ST chip breaker.



SHOULDERING / FACING / PROFILING
YG MILL [-ST Chip Breaker]

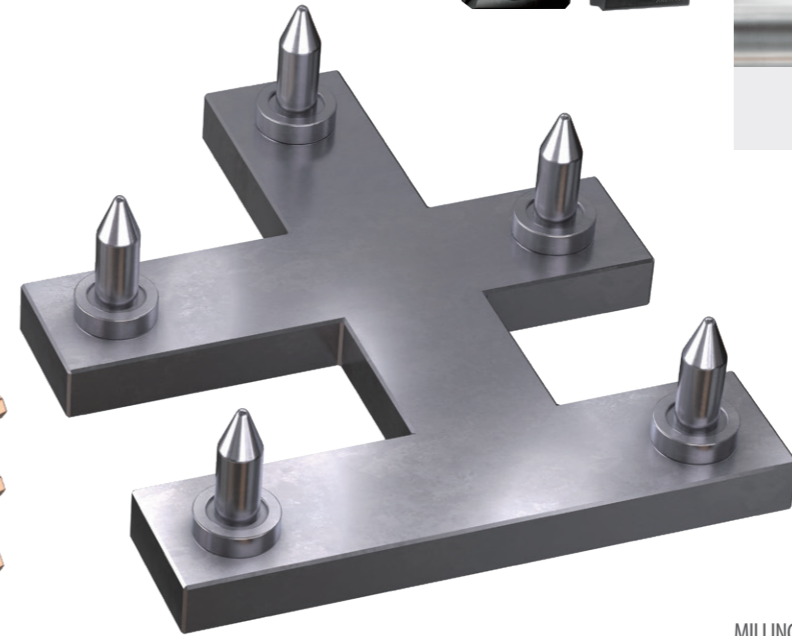
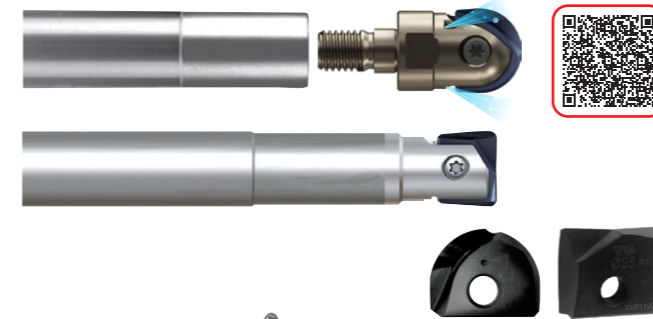


90°, High Feed and Round Inserts
YG Mill line is our line of premium indexable milling tools. With 90, 45 degrees, high feed milling and round inserts, featuring the positive -ST chip breaker for stainless steel, shell and shank cutters, these tools are invaluable for Die & Mold machining.



COPY MILLING / PROFILING
i-Xmill [for STAINLESS STEELS]

The versatile i-Xmill line, which is specifically developed with the Die & Mold industry in mind is once again up to the challenge. Stainless steel applications covered as well.



MILLING
TITANOX-POWER

Solid carbide End Mill line for Titanium, Stainless Steels, and difficult to cut materials. Available with 4 flute double core technology, 5 flute and rougher profile for both full slotting and side high performance milling.



TITANOX-POWER HPC
New 5 Flute Design For Heavy Cutting



YG-1's High Performance Core Design



THREADING
PRIME TAP
YG TAP INOX
SYNCHRO TAP COLD FORMING

YG-1 offers a full range of threading solutions. Spiral Flute, Spiral Point, Cold Forming Taps as well as Thread Mills are available and achieve excellent results by our innovative technology.



MILLING / HEAVY CUTTING / SEMI FINISHING / PROFILING
V7 PLUS

Solid Carbide End Mill line for a wide range of materials. Available in 4 and 6 flutes, with chamfer, ball nose, and corner radius. The 6 flute, available with Chip Splitters, is suitable for fine finishing and trochoidal milling as well.



* We can provide our full line; milling, holmaking and threading for every Die & Mold application

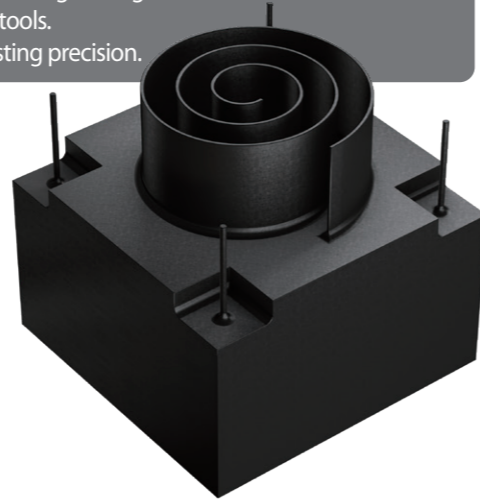
QR Scan QR code to see Catalogs

GRAPHITE

In the Die & Mold industry, the production of graphite electrodes is a fundamentally important component alongside copper electrodes. Electrodes make possible what cannot be produced directly on the die set using cutting tools. Even intricate 3D contours can be produced precisely in the μm range with the right tools. Wear-resistant diamond coatings are required to shape the abrasive graphite with lasting precision.

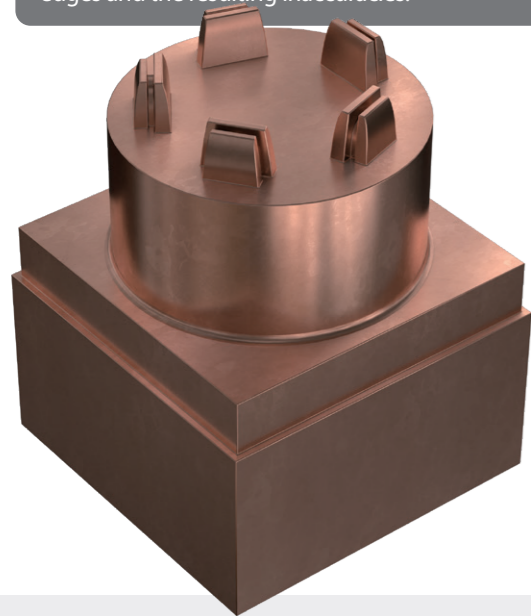
MILLING
D-POWER GRAPHITE

Solid Carbide End Mill line, specifically designed for graphite machining. The geometry and diamond coating result in fine milling and long tool life. Range of diameters from 0.2 mm.



COPPER

In addition to graphite, copper electrodes also play a leading role. Although there is no annoying graphite dust, the tendency of copper to stick poses a challenge for the tools. Only the sharpest cutting edges or chemically inert coatings such as DLC (Diamond Like Carbon) can prevent built-up edges and the resulting inaccuracies.



MILLING
CRX-S

Solid Carbide End Mill line, specifically designed for Copper machining. The geometry and DLC coating result in fine milling and long tool life. Range of diameters from 0.5 mm.



THREADING
**THREAD MILL | PRIME TAP
SYNCHROTAP | COMBO TAP**

YG-1 offers a full range of threading solutions. Spiral Flute, Spiral Point, Straight Flute, Cold Forming Taps as well as Thread Mills are available and achieve excellent results by our innovative technology.



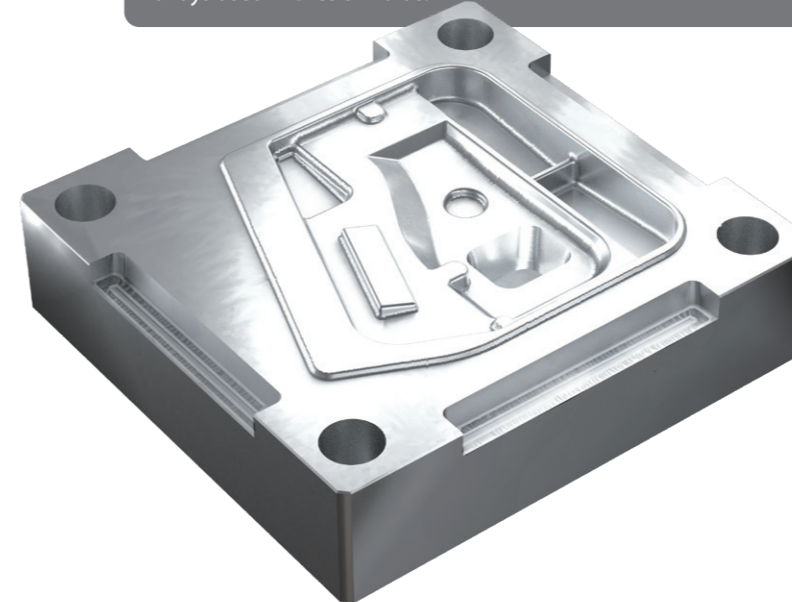
HIGH PRECISION / MILLING / PROFILING / FINISHING
ALU-POWER

Suitable for nonferrous workpiece materials including aluminum and aluminum alloys. Improved workpiece surface finishes and reduced tool wear due to mirror grind of cutting edges.



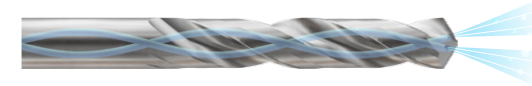
ALUMINUM

Aluminum alloys are frequently found in the production of prototype molds, low production molds, and some accessory parts. The characteristics of these alloys require specific attention be given to proper preparation of the cutting tool in order to prevent sticking of the material and allow adequately high cutting speeds. YG-1 is able to provide high-performance tools with the proper geometry and tool coatings to machine the specific aluminum alloys used in Dies & Molds.



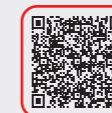
DRILLING
DREAM DRILLS ALU (3xD, 5xD, 8xD)

Good chip evacuation due to flute geometry & chip space. Better finish & built-up edge prevention. Suitable for fast, efficient drilling in aluminum and aluminum alloys. Optimized thinning for aluminum and aluminum alloys to prevent any clogging caused by chip welding.



REAMING
CARBIDE REAMERS

Precision is paramount in machining top quality Die & Mold sets. Our straight and spiral flute carbide reamers perform perfectly every time.



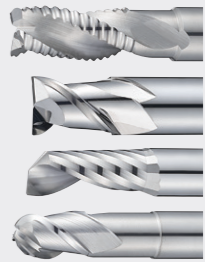
THREADING
**THREAD MILL | PRIME TAP
SYNCHROTAP | COMBO TAP**

YG-1 offers a full range of threading solutions. Spiral Flute, Spiral Point, Straight Flute, Cold Forming Taps as well as Thread Mills are available and achieve excellent results by our innovative technology.



HIGH PRECISION / MILLING / PROFILING / FINISHING
ALU-POWER

Suitable for nonferrous workpiece materials including aluminum and aluminum alloys. Improved workpiece surface finishes and reduced tool wear due to mirror grind of cutting edges.



HIGH PRODUCTIVITY / MILLING / PROFILING / FINISHING
ALU-POWER HPC

Solid Carbide End Mill line, specifically designed to cut aluminum alloy. Excellent for preparing prototype Die & Mold sets. Suitable for a variety of applications-side cutting, slotting, ramping etc. Comes in a variety of geometries-square, corner radius and ball type are available.



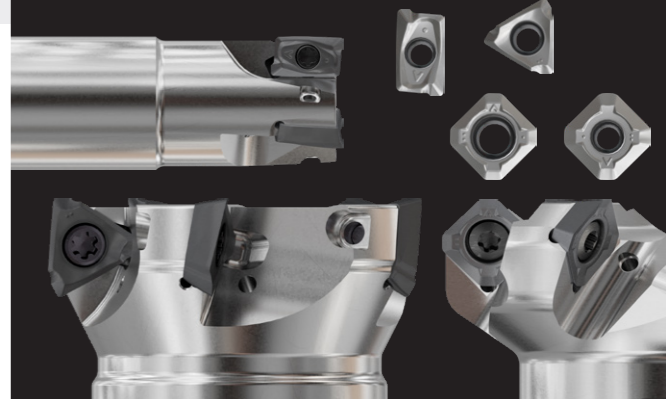
Optimized
Chip Breaker
Profile Design



* Available in Non-coated & DLC coated items

FACING / SHOULDERING
**YG MILL & YG SM3 Mill
[-AL Chip Breaker]**

YG Mill line of indexable tools is truly versatile. YG-1 provides an excellent solution even for cutting aluminum. Experience the increase in productivity that our inserts with -AL Chip Breaker and YG50 grades.



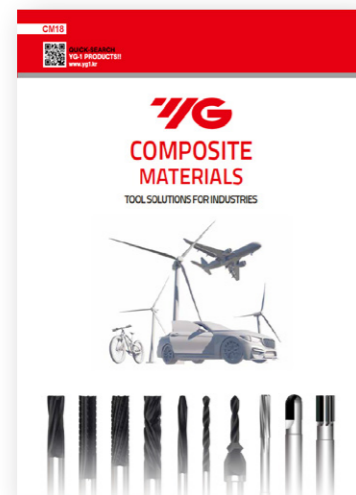
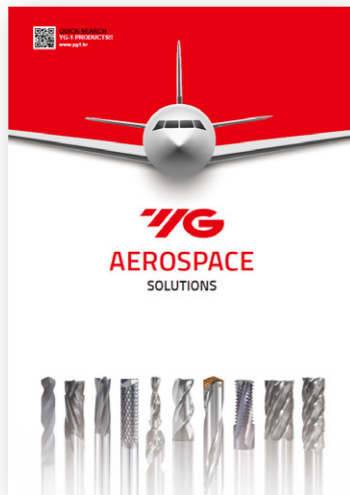
* We can provide our full line; milling, holemaking and threading for every Die & Mold application

QR Scan QR code to see Catalogs



INDUSTRY SOLUTIONS BROCHURES

YG-1 has many more industry solutions for you!
Automotive, Aerospace, Composite Materials, Die & Mold, and many more to come.
Whichever industry area you're coming from, YG-1 has the solution for you
Check what we have for you at the following web link:



HIGH QUALITY PRODUCTS and ON TIME DELIVERY for WORLD-WIDE CUSTOMERS

Since 1982, YG-1 has been committed to quality, innovation and the unique customer experience.
Our performance and experience have granted YG-1 the global impression of one of the leading manufacturers of high quality cutting tool solutions. This global footprint expands over 75 countries, with international logistic centers, pledging to our customers to give the best service available today - and tomorrow.

EUROPE

- | | | | | | |
|----------------|------------------------|-----------|-------------|----------------|-----------------|
| BELGIUM | FINLAND | ITALY | PORTUGAL | SLOVENIA | THE NETHERLANDS |
| CROATIA | FRANCE | LITHUANIA | ROMANIA | SPAIN | TÜRKIYE |
| CZECH REPUBLIC | GERMANY | NORWAY | SWEDEN | UNITED KINGDOM | DENMARK |
| HUNGARY | POLAND | SERBIA | SWITZERLAND | AUSTRIA | GREECE |
| ALBANIA | BOSNIA AND HERZEGOVINA | UKRAINE | UZBEKISTAN | BULGARIA | |
| ESTONIA | | | | | |

ASIA PACIFIC

- | | | | | |
|-----------|--------------|-------------|----------------------|---------|
| AUSTRALIA | INDONESIA | MALAYSIA | SOUTH KOREA | VIETNAM |
| CHINA | ISRAEL | PAKISTAN | TAIWAN | |
| HONG KONG | JAPAN | PHILIPPINES | THAILAND | |
| INDIA | SAUDI ARABIA | SINGAPORE | UNITED ARAB EMIRATES | |

AMERICAS

- | | | | | |
|--------|--------|----------|--------|---------------|
| BRAZIL | CANADA | COLOMBIA | MEXICO | UNITED STATES |
|--------|--------|----------|--------|---------------|

AFRICA

- | | |
|-------|--------------|
| EGYPT | SOUTH AFRICA |
|-------|--------------|

YG-1 CO., LTD.

HEAD OFFICE

13-40, Songdogwahak-ro 16beon-gil, Yeonsu-gu, Incheon 21984, South Korea

Phone: +82-32-526-0909 <https://www.yg1.solutions> E-mail: yg1@yg1.solutions