

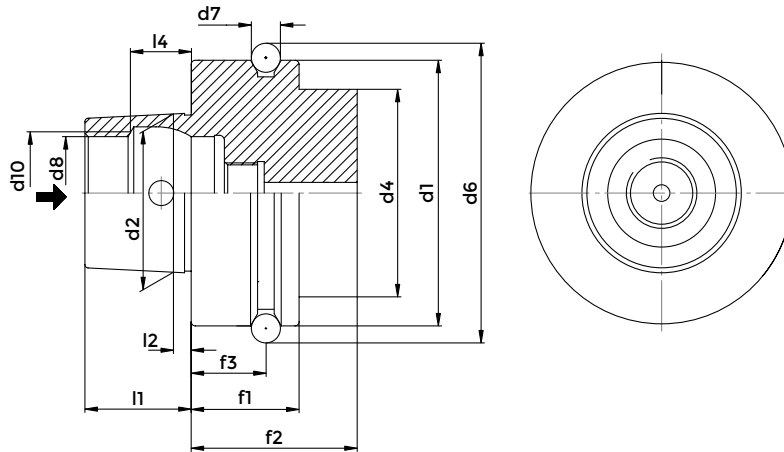


HSK F CHUCKS

DIN 69893-6



**TAPER SHANKS
DATA SHEET**



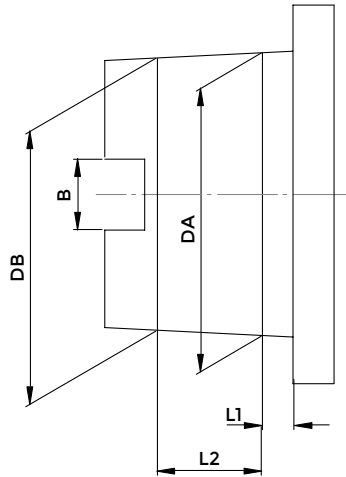
DIN 69893 F

	HSK 50	HSK 63
d1	50	63
d2	30	38
d4	42	53
d6	59,3	72,3
d7	7	7
d8	21	26
d10	23	29
f1	26	26
f2	42	42
f3	18	18
l1	20	25
l2	4	5
l4	11,42	14,13

FORM F

- Used for high frequency spindles and wood machining.
- With larger collar.
- Central coolant supply possible trough coolant hose.

CONE TOLERANCE



DIN 69893 F

HSK	L1	L2	DA	DB	B (only type A+C)
32 A+C	3,2	7,3	24 +0.005 +0.007	23,27 +0.003 +0.005	7.05 +/- 0.04
40 A+C+E	4	9,5	30 +0.005 +0.007	29,05 +0.003 +0.005	8.05 +/- 0.04
40 B+D	3,2	7,3	24 +0.005 +0.007	23,27 +0.003 +0.005	-
50 A+C+E	5	11	38 +0.006 +0.009	36,9 +0.003 +0.006	10.54 +/- 0.04
50 B+D+F	4	9,5	30 +0.005 +0.007	29,05 +0.003 +0.005	-
63 A+C+E	6,3	14,7	48 +0.007 +0.011	46,53 +0.003 +0.007	12.54 +/- 0.04
63 B+D+F	5	11	38 +0.006 +0.009	36,9 +0.003 +0.006	-
100 A+C	10	24	75 +0.009 +0.015	72,6 +0.003 +0.009	20.02 +/- 0.04
100 B+D	8	19	60 +0.008 +0.013	58,1 +0.003 +0.008	-

TECHNICAL DATA KINTEK CHUCKS WITH ISO FITTING

All KINTEK toolholders are manufactured according to DIN norms. (these norms provide the same classes of tolerance for the attachment DIN69893 A+C, B+D, E, F)

COLLET CHUCK RUNOUT ACCURACY

The norm DIN 69882-6 permits a runout error of 0,005 mm. for DIN6499/ISO15488 collet chucks.

SHELL END MILL ADAPTOR RUNOUT ACCURACY

Our shell end mill adaptors meet the requirements of the norm DIN 69882-2, which prescribes for diameters Ø 16,22,27,32 a runout accuracy of 0,01

WELDON END MILL HOLDER RUNOUT ACCURACY

According to norm DIN 69882-4 Weldon end mill holders have to meet the following:

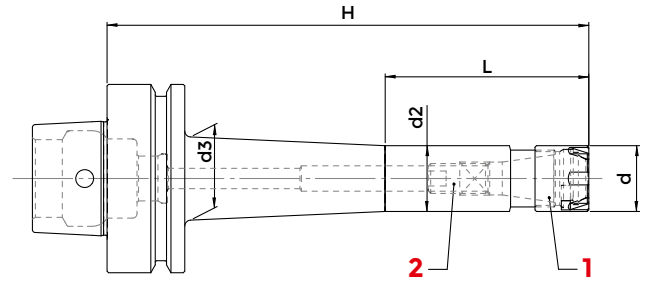
BORE: H5

RUNOUT ACCURACY: 0.005.

CONSTRUCTIVE FEATURES

- Manufactured with Casehardening Steel.
- Casehardened with depth 0,4 - 0,5 mm
- Hardened-Tempered
- Hardness HRC 58+-2, Strength 800-1000 N/mm²
- Black oxidized
- Thread of collet nuts, internal and external diameters are completely grinding finished
- Tested 100% with certified measuring instruments

ER MINI COLLET CHUCKS - HIGH SPEED LINE



DIN 69893F - DIN 6499/ISO 15488

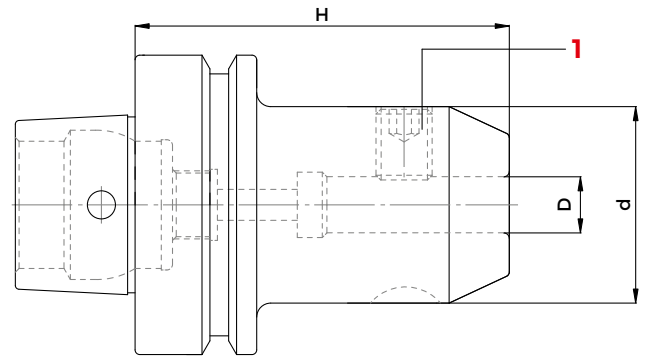
HIGH SPEED LINE

COD.	DESCRIPTION	HSK	H	D	d	ER	L	d2	d3	G2.5 30000	HIGH SPEED LINE		
											1 NUT	2 SCREW	WRENCH
214-37401	HSK50FH80ER16M	50	80	0,5÷10	22	16M	-	21,5	-	•			
214-37404	HSK63FH100ER16M	63	100	0,5÷10	22	16M	47	21,5	26	•			
214-37449	HSK63FH100ER20M	63	100	1÷15	28	20M	-	27	-	•			
214-37450	HSK63FH100ER25M	63	100	1÷16	35	25M	-	33	-	•			
214-37412	HSK63FH160ER25M	63	160	1÷16	35	25M	68	35	46	•			
214-37411	HSK63FH160ER16M	63	160	0,5÷10	22	16M	57	20	28	•			

ACCESSORIES




END MILL HOLDERS WELDON - HIGH SPEED LINE

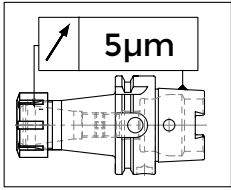


DIN 69893F - DIN 1835/B

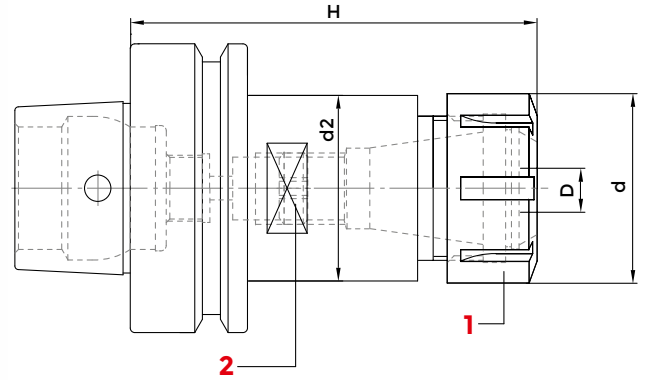
HIGH SPEED LINE

COD.	DESCRIPTION	HSK	H	D	d	G2.5 30000	1
							SCREW
							
213-17403	HSK50FH70WE10	50	70	10	40	•	811-106004
213-17404	HSK50FH80WE12	50	80	12	48	•	811-106005
213-17422	HSK63FH65WE06	63	65	6	25	•	811-106001
213-17423	HSK63FH65WE08	63	65	8	28	•	811-106002
213-17424	HSK63FH65WE10	63	65	10	35	•	811-106004
213-17410	HSK63FH80WE12	63	80	12	42	•	811-106005
213-17411	HSK63FH80WE16	63	80	16	48	•	811-106006
213-17412	HSK63FH85WE20	63	85	20	52	•	811-106007
213-17413	HSK63FH110WE25	63	110	25	65	•	811-106008
213-17414	HSK63FH110WE32	63	110	32	72	•	811-106009

ER COLLET CHUCKS - HIGH SPEED LINE



H= 0 > 100 mm - 5 µm
H= 100 > 200 mm - 10 µm



DIN 69893 F - DIN 6499/ISO 15488

HIGH SPEED LINE

COD.	DESCRIPTION	HSK	H	D	d	ER	L	d2	d3	G2.5 30000	1			2		
											NUT	SCREW	WRENCH	NUT	SCREW	WRENCH
214-37402	HSK50FH80ER25	50	80	1÷16	42	25	-	32	-	•				812-203001	811-303121	816-203001
214-37448	HSK50FH73ER32	50	73	2÷20	50	32	-	40	-	•				812-203002	811-303118	816-203002
214-37403	HSK50FH100ER32	50	100	2÷20	50	32	-	40	-	•				812-203002	811-303118	816-203002
214-37452	HSK63FH120ER16	63	120	1÷12	32	16	-	28	-	•				812-203005	811-102038	816-203000
214-37453	HSK63FH160ER16	63	160	1÷12	32	16	-	28	-	•				812-203005	811-102038	816-203000
214-37454	HSK63FH100ER20	63	100	1÷15	35	20	-	34	-	•				812-203006	811-102046	816-203005
214-37455	HSK63FH120ER20	63	120	1÷15	35	20	-	34	-	•				812-203006	811-102046	816-203005
214-37456	HSK63FH160ER20	63	160	1÷15	35	20	-	34	-	•				812-203006	811-102046	816-203005
214-37457	HSK63FH73ER25	63	73	1÷16	42	25	-	41,5	-	•				812-203001	811-303121	816-203001
214-37405	HSK63FH100ER25	63	100	1÷16	42	25	-	41,5	-	•				812-203001	811-303121	816-203001
214-37458	HSK63FH120ER25	63	120	1÷16	42	25	-	41,5	-	•				812-203001	811-303121	816-203001
214-37459	HSK63FH160ER25	63	160	1÷16	42	25	-	41,5	-	•				812-203001	811-303121	816-203001
214-37429	HSK63FH73ER32	63	73	2÷20	50	32	-	49,5	-	•				812-203002	811-303118	816-203002
214-37406	HSK63FH100ER32	63	100	2÷20	50	32	-	49,5	-	•				812-203002	811-303118	816-203002
214-37460	HSK63FH120ER32	63	160	0,5÷10	22	32	57	21,5	35	•				812-203013	811-303119	816-203009
214-37413	HSK63FH160ER32	63	160	2÷20	50	32	-	49,5	-	•				812-203002	811-303118	816-203002
214-37407	HSK63FH80ER40	63	80	3÷30	63	40	-	50	-	•		-		812-203003	-	816-203003
214-37408	HSK63FH120ER40	63	120	3÷30	63	40	-	50	-	•		-		812-203003	-	816-203003
214-37444	HSK63FH160ER40	63	160	3÷30	63	40	-	50	-	•		-		812-203003	-	816-203003

ACCESSORIES

p. 633



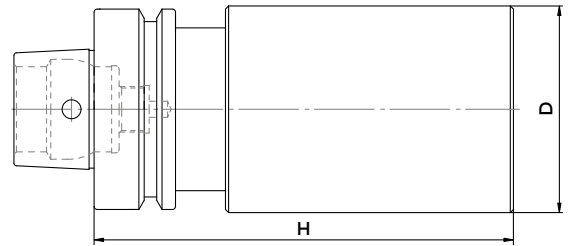
p. 615



p. 636



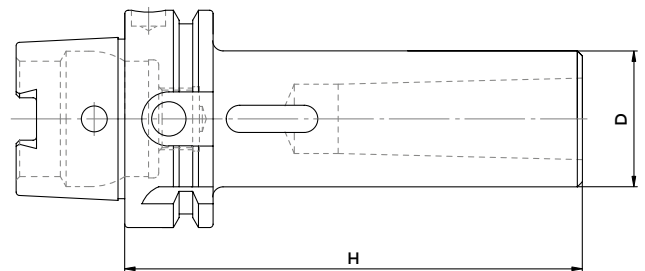
BLANCK TOOLHOLDERS WITH SOFT SHANK



DIN 69893 F

COD.	DESCRIPTION	HSK	H	d
217-17402	HSK63FH200D63SM	63	200	63

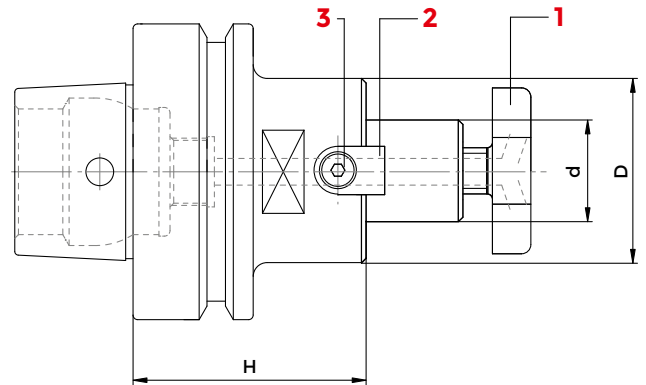
MORSE TAPER MILL ADAPTERS WITH INTERNAL COOLANT



DIN 69893 F - ISO 3937

COD.	DESCRIPTION	HSK	CM	d	H
212-47405	HSK63FH120CM2P	63	2	32	120
212-47406	HSK63FH140CM3P	63	3	40	140
212-47407	HSK63FH165CM4P	63	4	48	165

FACE MILL HOLDERS-TENONS DRIVE



DIN 69893 F - ISO 3937

COD.	DESCRIPTION	HSK	H	d	d2	G2.5 20000	1	1	2	3	WRENCH
							CROSS SCREW	CROSS SCREW ON ENQIRY	DOWELS	SCREW	
216-77413	HSK50FH50D16F	50	50	16	38	•					
216-77402	HSK50FH50D22F	50	50	22	48	•	811-107003	811-107013	814-202280	811-101004	816-130002
216-77414	HSK50FH50D27F	50	50	27	58	•	811-107004	811-107014	814-202250	811-101011	816-130003
216-77404	HSK63FH45D16F	63	45	16	38	•	811-107005	811-107015	814-202270	811-101018	816-130004
216-77416	HSK63FH100D16F	63	100	16	38	•	811-107003	811-107013	814-202280	811-101004	816-130002
216-77405	HSK63FH50D22F	63	50	22	48	•	811-107004	811-107014	814-202250	811-101011	816-130003
216-77417	HSK63FH100D22F	63	100	22	48	•	811-107005	811-107015	814-202270	811-101018	816-130004
216-77406	HSK63FH55D27F	63	55	27	58	•	811-107004	811-107014	814-202250	811-101011	816-130003
216-77418	HSK63FH100D27F	63	100	27	58	•	811-107005	811-107015	814-202270	811-101018	816-130004
216-77407	HSK63FH60D32F	63	60	32	78	•	811-107006	811-107016	814-202630	811-101029	816-130005
216-77419	HSK63FH100D32F	63	100	32	66	•	811-107006	811-107016	814-202630	811-101029	816-130005
216-77415	HSK63FH60D40F	63	60	40	80	•	811-107007	811-107017	814-202710	811-101029	816-130006
216-77420	HSK63FH100D40F	63	100	40	80	•	811-107007	811-107017	814-202710	811-101029	816-130006

ACCESSORIES

p. 674



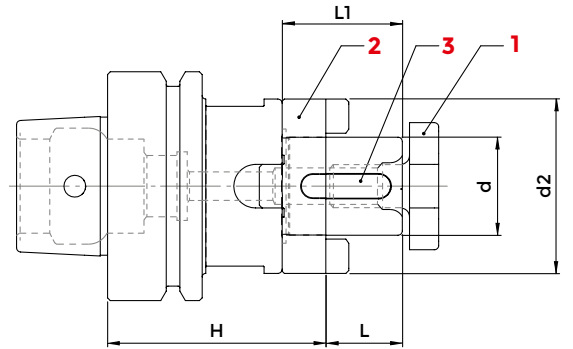
p. 676



p. 675



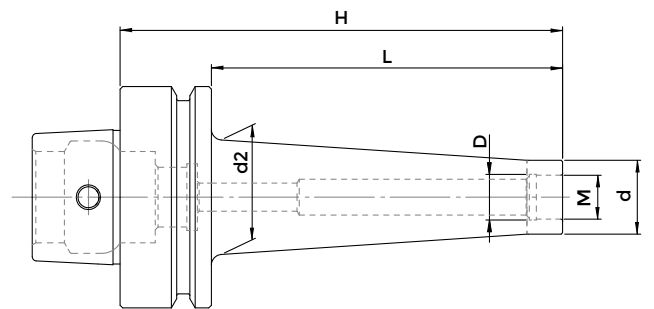
COMBI-SHELL MILL ADAPTORS



DIN 69893 F

COD.	DESCRIPTION	HSK	H	d	d2	L	L1	G6,3 8000	1	2	3	WRENCH
									RING	CROSS SCREW	KEY	
216-17404	HSK63FH60D16C	63	60	16	32	17	27	•				816-130002
216-17405	HSK63FH60D22C	63	60	22	40	19	31	•				816-130003
216-17406	HSK63FH60D27C	63	60	27	48	21	33	•				816-130004
216-17407	HSK63FH60D32C	63	60	32	58	24	38	•				816-130005
216-17408	HSK63FH60D40C	63	40	40	70	27	41	•				816-130006

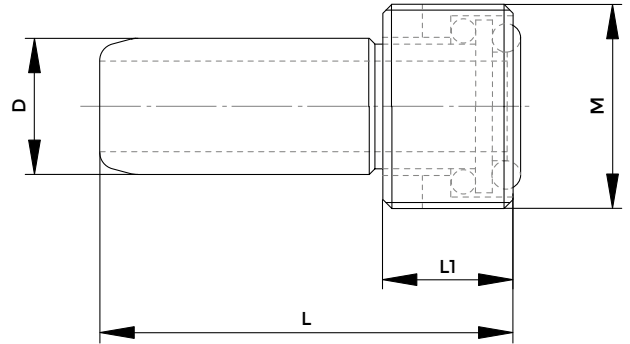
END MILL HOLDERS FOR MILLING CUTTERS WITH THREADED SHANKS



DIN 69893 F

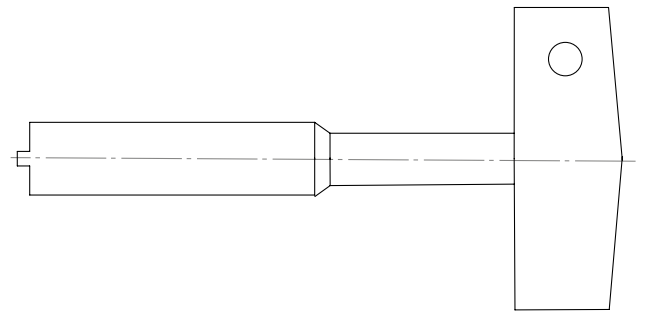
COD.	DESCRIPTION	HSK	M	D	d	d2	H	L	G2.5 20000
217-87407	HSK63FH84M8	63	M8	8,5	13	23	84	50	•
217-87408	HSK63FH84M10	63	M10	10,5	18	23	84	50	•
217-87409	HSK63FH109M10	63	M10	10,5	18	28	109	75	•
217-87410	HSK63FH84M12	63	M12	12,5	21	24	84	50	•
217-87411	HSK63FH134M12	63	M12	12,5	21	33	134	100	•
217-87412	HSK63FH59M16	63	M16	17	29	34	59	33	•
217-87413	HSK63FH84M16	63	M16	17	29	34	84	50	•
217-87414	HSK63FH109M16	63	M16	17	29	34	109	75	•
217-87415	HSK63FH134M16	63	M16	17	29	36	134	100	•

COOLANT SUPPLY UNIT



COD.	HSK	M	d	L	L1
832-016010	A+C32, B+D40	M10x1	6	26	5,5
832-016020	A+C40, B+D50, E40, F50	M12x1	8	29,3	7,5
832-016030	A+C50, B+D63, E50, F63	M16x1	10	33	9,5
832-016040	A+C63, E63	M18x1	12	36,6	11,5
832-016050	B+D100-80A	M20x1,5	14	40	13,5
832-016060	A+C100	M124x1,5	16	44	15,5

KEY FOR COOLANT SUPPLY UNIT



COD.	HSK
0470	32
816-204022	40
816-204023	50
816-204024	63
816-204025	100